



IPCOWALA INSTITUTE OF ENGINEERING & TECHNOLOGY

(MANAGED BY SANSKRUTI SANRAKSHA CHARITABLE TRUST)

APPROVED BY : AICTE, AFFILIATED WITH : GTU.

Ipcowala Education Campus Dharmaj - 388430 Ta. Petlad, Di. Anand (Gujarat)
Mob. : 9099063458,9978947157 Email :ipcowalaengg@gmail.com web : www.iietedu.uc.in

MANDATORY DISCLOSURE

“The information has been provided by the concerned institution and the onus of authenticity lies with the institution and not on AICTE.”

I. AICTE File No. : 1-441855031

Date & Period of Application: 2011-12

Current Year: 2022

II. NAME OF THE INSTITUTION:

Name	IPCOWALA INSTITUTE OF ENGINEERING & TECHNOLOGY
Address	AMRAPALI TOWNSHIP, PETLAD-KHAMBHAT ROAD, DHARMAJ-388430, GUJARAT (INDIA)
Village	DHARMAJ
Taluka	PETLAD
District	ANAND
PIN	388 430
State	GUJARAT
Phone No	+91 9099063458

III. NAME & ADDRESS OF THE Principal:

Name	Dr. Premal J. Patel
Address	IPCOWALA INSTITUTE OF ENGINEERING & TECHNOLOGY
Phone	9925198251
Email	Primal_jpatel@yahoo.com



IPCOWALA INSTITUTE OF ENGINEERING & TECHNOLOGY

(MANAGED BY SANSKRUTI SANRAKSHA CHARITABLE TRUST)

APPROVED BY : AICTE, AFFILIATED WITH : GTU.

Ipcowala Education Campus Dharmaj - 388430 Ta. Petlad, Di. Anand (Gujarat)
Mob. : 9099063458,9978947157 Email :ipcowalaengg@gmail.com web : www.iiededu.uc.in

IV. NAME OF THE AFFILIATING UNIVERSITY:

GUJARAT TECHNOLOGICAL UNIVERSITY

Nr.Vishwakarma Government Engineering College
Nr.Visat Three Roads, Visat - Gandhinagar Highway
Chandkheda, Ahmedabad – 382424 – Gujarat.

V. GOVERNANCE

❖ Members of the Board and their brief background

Sanskruti Sanraksha Charitable Trust is Registered on 15/09/2001 under Sanskruti Sanraksha Charitable Trust Registration Act-1950.The registration No. is E/2243/Anand. The trust is aimed at establishing Quality Education and thereby serving the society providing engineering college In campus. Campus is also full-fledged with Staff Quarters, boy's hostel, girl's hostel.

List of the members of Governing body of Trust

Sr. No.	Name of Trustees	Designation
1	JITENDRABHAI RAOJIBHAI PATEL	Chairman
2	BANKIMCHANDRA R. VYAS	Trustee
3	JAYENDRABHAI GHANSHYAMBHAI PATEL	Trustee
4	CHANDRAKANT R. PATEL	Trustee
5	VIPINBHAI H. PATEL	Trustee

Frequency of the Board Meetings and Academic Advisory Body **Twice a year.**



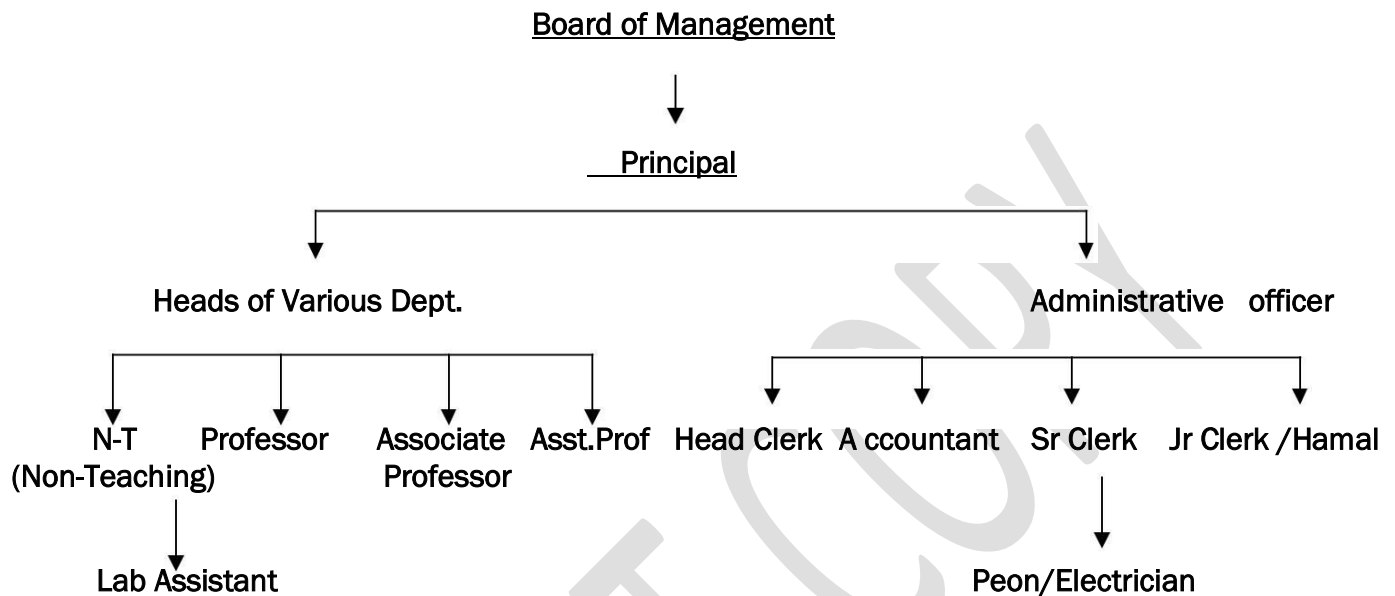
IPCOWALA INSTITUTE OF ENGINEERING & TECHNOLOGY

(MANAGED BY SANSKRUTI SANRAKSHA CHARITABLE TRUST)

APPROVED BY : AICTE, AFFILIATED WITH : GTU.

Ipcowala Education Campus Dharmaj - 388430 Ta. Petlad, Di. Anand (Gujarat)
Mob. : 9099063458,9978947157 Email :ipcowalaengg@gmail.com web : www.iietedu.uc.in

❖ Organizational chart and processes:



❖ Nature and Extent of involvement of faculty and students in academic affairs/ improvements

☛ Some of the senior teachers are member of BOS & time-to-time they revise the syllabus according to industrial needs. Students (Mostly Alumni' s) send their feedback to college via college website & we try to incorporate their suggestions in improving academics.

❖ Mechanism/Norms & Procedure for democratic/good Governance

☛ We are following all rules and regulation of AICTE & Gujarat Technological University.

❖ Grievance redressed mechanism for faculty, staff and students.

☛ We have a feedback system for faculty/staff & students. After receiving student' s feedback counseling committee reviews the feedback & suggest the possible improvement s to the management. Faculty/staff feedbacks/suggestions are directly collected by the principal & necessary actions are taken if required.



IPCOWALA INSTITUTE OF ENGINEERING & TECHNOLOGY

(MANAGED BY SANSKRUTI SANRAKSHA CHARITABLE TRUST)

APPROVED BY : AICTE, AFFILIATED WITH : GTU.

Ipcowala Education Campus Dharmaj - 388430 Ta. Petlad, Di. Anand (Gujarat)
Mob. : 9099063458,9978947157 Email :ipcowalaengg@gmail.com web : www.iietedu.uc.in

V. PROGRAMMES:

Sr No.	Name of the Programmes
❖ 1	Computer Engineering (BE - 4 YEAR)
❖ 2	Mechanical Engineering (BE - 4 YEAR)
3	Automobile Engineering (BE - 4 YEAR)
4	Machine Design (ME – 2 YEAR)
5	Computer Engineering (ME – 2 YEAR)
6	Computer Engineering (Diploma - 3 YEAR)
7	Information Technology (Diploma - 3 YEAR)
8	Mechanical Engineering (Diploma - 3 YEAR)
9	Civil Engineering (Diploma - 3 YEAR)
10	Automobile Engineering (Diploma - 3 YEAR)
11	Electrical Engineering (Diploma - 3 YEAR)

❖ Name of the Programs approved by the AICTE:

For each Programmes the following details are to be given:

Sr No.	Name	Number of Seats	Duration	Fees As Per F.R.C.
1	Computer Engineering (BE - 4 YEAR)	60	4 years	51000.00
2	Mechanical Engineering (BE - 4 YEAR)	60	4 years	51000.00
3	Automobile Engineering (BE - 4 YEAR)	30	4 years	51000.00
4	Machine Design (ME – 2 YEAR)	12	2 years	90000.00
5	Computer Engineering (ME – 2 YEAR)	12	2 years	90000.00
6	Computer Mechanical Engineering (Diploma - 3 YEAR)	60	3 years	34000.00
7	Information Technology (Diploma - 3 YEAR)	60	3 years	34000.00
8	Mechanical Engineering (Diploma - 3 YEAR)	60	3 years	34000.00
9	Civil Engineering (Diploma - 3 YEAR)	60	3 years	34000.00
10	Automobile E Engineering (Diploma - 3 YEAR)	60	3 years	34000.00
11	Electrical Engineering (Diploma - 3 YEAR)	60	3 years	34000.00



IPCOWALA INSTITUTE OF ENGINEERING & TECHNOLOGY

(MANAGED BY SANSKRUTI SANRAKSHA CHARITABLE TRUST)

APPROVED BY : AICTE, AFFILIATED WITH : GTU.

Ipcowala Education Campus Dharmaj - 388430 Ta. Petlad, Di. Anand (Gujarat)
Mob. : 9099063458,9978947157 Email :ipcowalaengg@gmail.com web : www.iietedu.uc.in

- **Placement Facilities: Available**
- **Campus placement in last three years with minimum salary, maximum salary and average salary:**

Sr. No.	Branch	Placed Students	Minimum Salary	Maximum Salary	Average Salary
1	Computer Engineering (BE - 4 YEAR)	8	3.6 LPA	4 LPA	3.8 LPA
2	Mechanical Engineering (BE - 4 YEAR)	4	2.5 LPA	2.5 LPA	2.5 LPA
3	Automobile Engineering (BE - 4 YEAR)	1	2 LPA	2 LPA	2 LPA
5	Civil Engineering (BE - 4 YEAR)	2	2.5 LPA	2.5 LPA	2.5 LPA
4	Machine Design (ME – 2 YEAR)	0	NA	NA	NA
5	Computer Engineering (ME – 2 YEAR)	1	3.8 LPA	3.8 LPA	3.8 LPA
6	Computer Engineering (Diploma – 3 YEAR)	15	1.7 LPA	2.1 LPA	1.9 LPA
7	Information Technology (Diploma - 3 YEAR)	10	1.9 LPA	2.1 LPA	2 LPA
8	Mechanical Engineering (Diploma - 3 YEAR)	16	1.6 LPA	2 LPA	1.8 LPA
9	Civil Engineering (Diploma - 3 YEAR)	6	1.8 LPA	1.8 LPA	1.8 LPA
10	Automobile Engineering (Diploma - 3 YEAR)	4	1.6 LPA	1.6 LPA	1.6 LPA

VI. FEE

❖ Details of fee, as approved by State Fees Committee, for the Institution:

- Tuition fee for BE Students of Rs.51000/- per annum per students, ME Students of Rs.90000/- per annum per students, Diploma Students of Rs. 340000/- per annum per students was decided by fee Regulatory committee of the state government.

- The total fee of the students had been paid term wise to the concern college after the completion of the admission process.

❖ No. of Fee waivers granted with amount and name of students. -

Sr. No	Enrollment No.	Branch	Student name	Number of seats	Admission years	Fee TFW
1	199950307001	Computer	BAROT UJJAVALKUMAR MUKESHBHAI	3	2019-20	0
2	199950307025	computer	PATEL VAISHVIK YOGESHBHAI			0
3	199950307063	computer	VAGHELA KHUSHIBEN KANTIBHAI			0
4	191010107010	Computer	VAGHELA SAHILKUMAR ASHRAFHBHAI	1(BE)	2019-20	0



IPCOWALA INSTITUTE OF ENGINEERING & TECHNOLOGY

(MANAGED BY SANSKRUTI SANRAKSHA CHARITABLE TRUST)

APPROVED BY : AICTE, AFFILIATED WITH : GTU.

Ipcowala Education Campus Dharmaj - 388430 Ta. Petlad, Di. Anand (Gujarat)
Mob. : 9099063458,9978947157 Email :ipcowalaengg@gmail.com web : www.iietedu.uc.in

5	209510307020	Computer	MULTANI JUNED RAFIKBHAI	3	2020-21	0
6	209510307028	Computer	DAVE SHREYA SHAILESHBHAI			0
7	209510307033	Compter	GOSWAMI DARSHNABEN DASHRATHPURI			0
8	219510307040	Computer	KA.PATEL JANVI YOGESHBHAI	1	2021-22	0
9	199950316017	IT	PARMAR AJAYSINH RAJESHBHAI	2	2019-20	0
11	199950316020	IT	PATEL AMANKUMAR			0
12	209510316002	IT	SHAH AANGI MINESHKUMAR	2	2020-21	0
13	209510316042	IT	PRAJAPATI RIYA KETANKUMAR			0
14	219510316026	IT	PATEL DHRSTI GHANSYAMBHAI	1	2021-22	0
15	199210319511	MECHANICAL	MAKWANA SAVANKUMAR JAGDISHBHAI	2	2019-20	0
16	199510319516	MECHANICAL	PANCHAL VIKASHKUMAR RAJESHBHAI		2019-20	0
17	209510319505	MECHANICAL	DHOBI KALPESHKUMAR MOHANBHAI	1(CTOD)	2020-21	0
18	199510306501	CIVIL	KACHHIYA ARTIBEN TARUNBHAI	1	2019-20	0
19	209510306005	CIVIL	PATEL PARTH BHARATBHAI	1	2020-21	0
20	209510309005	ELECTRICAL	PATEL YAMAN ANILBHAI	1	2020-21	0
21	219510309501	ELECTRICAL	CHAUHAN VIPULKUMAR ROHITBHAI	1(CTOD)	2021-22	0

- ❖ Number of scholarship offered by the institute, duration and amount –
- ❖ Criteria for fee waivers/scholarship. – As per guideline of Guj. Govt.
- ❖ Estimated cost of boarding and Lodging in Hostels. - NA

IX. ADMISSION PROCEDURE:

- ❖ As per the Guideline of Admission Committee.

XI. APPLICATION FORM:

Application form is issued by the institution on request with in the scheduled time as mentioned in The advertisement published in the state level newspapers (As per GTU Guideline).

- ❖ Downloadable application form, with online submission possibilities. : ---Yes---
- ❖ Composition of selection team for admission under Management Quota with the brief profiles of members (This information be made available in the public domain after the admission process is over)

College Admission committee

1. Mr. Premal J. Patel
2. Mr. Nainil Patel

Position

- Principal
Admin Officer

- ❖ Score of the individual candidates admitted arranged in order of merit.



IPCOWALA INSTITUTE OF ENGINEERING & TECHNOLOGY

(MANAGED BY SANSKRUTI SANRAKSHA CHARITABLE TRUST)

APPROVED BY : AICTE, AFFILIATED WITH : GTU.

Ipcowala Education Campus Dharmaj - 388430 Ta. Petlad, Di. Anand (Gujarat)
Mob. : 9099063458,9978947157 Email :ipcowalaengg@gmail.com web : www.iiededu.uc.in

- ❖ List of candidates who have been offered admission.
- ❖ Waiting list of the candidates in order of merit to be operative from the last date of joining of the first list candidates.
- ❖ List of the candidates who joined within the date, vacancy position in each category before operation of waiting list.

XII. INFORMATION ON INFRASTRUCTURE AND OTHER RESOURCES AVAILABLE

LIBRARY: Number of Library books/Titles/Journals available

SR. No	Course(s)	Number of titles of the books	Number of the books Volume	Journals	
				National	International
1	BE Engineering	1923	10031	66 (journals & Magazine)	18
2	ME Engineering	213	339		
3	Diploma Engineering	537	4196		

-- E-Library facilities Yes

-- Computer Available 10+1

COMPUTING FACILITIES:

- Number and Configuration of Systems- Intel core Ir -3^{7th} Generation

Diploma - Computer / IT					
Sr. No.	Sem.	Configuration	Lab Name.	Lab No.	Total P.C.
1		INTEL CORE IR -3 3RD GENERATION	C & C++	17	25
2		WINDOWS7 INTEL® CORE(TM) & DUO CPU	WEB DEVELOPMENT LAB	15	25
3		INTEL CORE IR -3 3RD GENERATION	MOBILE COMPUTING & WIRELESS COMMUNICATION	18	25
4		WINDOWS7 INTEL® CORE(TM) & DUO CPU	CYBER SECURITY	15	25
5		WINDOWS7 INTEL® CORE(TM) & DUO CPU	MOBILE COMPUTING & WIRELESS COMMUNICATION CYBER SECURITY INFORMATION SECURITY	11	25
6		INTEL CORE IR -3 3RD	DATABASE MANAGEMENT	17	25



IPCOWALA INSTITUTE OF ENGINEERING & TECHNOLOGY

(MANAGED BY SANSKRUTI SANRAKSHA CHARITABLE TRUST)

APPROVED BY : AICTE, AFFILIATED WITH : GTU.

Ipcowala Education Campus Dharmaj - 388430 Ta. Petlad, Di. Anand (Gujarat)
 Mob. : 9099063458,9978947157 Email :ipcowalaengg@gmail.com web : www.iietedu.uc.in

	GENERATION	SYSTEM		
7	WINDOWS7 INTEL® CORE(TM) & DUO CPU	DATA MINNING AND BUSINESS INTELLIGENCE	15	25
8	INTEL CORE IR -3 3RD GENERATION	MOBILE COMPUTING & WIRELESS COMMUNICATION	18	25
9	CASE STUDY PRACTICAL	CYBER SECURITY	11	25
10	NOT WORKING CONDITION(11)	INFORMATION SECURITY	11	25
11	INTEL CORE IR -3 3RD GENERATION	OPERATING SYSTEM	17	25
12	INTEL CORE IR -3 3RD GENERATION	C & C++	17	25
13	INTEL CORE IR -3 3RD GENERATION	WEB DEVELOPMENT LAB	18	25
14	INTEL CORE IR -3 3RD GENERATION	MOBILE COMPUTING & WIRELESS COMMUNICATION	17	25
15	INTEL CORE IR -3 3RD GENERATION	CYBER SECURITY	18)	25
16	INTEL CORE IR -3 3RD GENERATION	INFORMATION SECURITY	18	25
17	INTEL CORE IR -3 3RD GENERATION	DATABASE MANAGEMENT SYSTEM	17	25
18	WINDOWS7 INTEL® CORE(TM) & DUO CPU	DATA MINNING AND BUSINESS INTELLIGENCE	18	25
19		OPERATING SYSTEM	17	25
20	INTEL CORE IR -3 3RD GENERATION	OPERATING SYSTEM	18	25
21	INTEL CORE IR -3 3RD GENERATION	C & C++	18	25
22		WEB DEVELOPMENT LAB	15	25
23	INTEL CORE IR -3 3RD GENERATION	C & C++	12	25
24	INTEL CORE IR -3 3RD GENERATION	WEB DEVELOPMENT LAB	17	25
25	INTEL CORE IR -3 3RD GENERATION	DATABASE MANAGEMENT SYSTEM	18	25
26	INTEL CORE IR -3 3RD GENERATION	DATA MINNING AND BUSINESS INTELLIGENCE	12	25
27	INTEL CORE IR -3 3RD GENERATION	C & C++	17	25
28	WINDOWS7 INTEL® CORE(TM) & DUO CPU	WEB DEVELOPMENT LAB	18	25
29	DUO CPU	C & C++	17	25
30	WINDOWS7 INTEL® CORE(TM) & DUO CPU	WEB DEVELOPMENT LAB	18	25
31	WINDOWS7 INTEL® CORE(TM) & DUO CPU	DATABASE MANAGEMENT SYSTEM	11	25
32	WINDOWS7 INTEL® CORE(TM) & DUO CPU	DATA MINNING AND BUSINESS INTELLIGENCE	17	25
33	INTEL CORE IR -3 3RD GENERATION	MOBILE COMPUTING & WIRELESS COMMUNICATION	14	25
34	WINDOWS7 INTEL® CORE(TM) & DUO CPU	CYBER SECURITY	15	25
35	DUO CPU	INFORMATION SECURITY	15	25



IPCOWALA INSTITUTE OF ENGINEERING & TECHNOLOGY

(MANAGED BY SANSKRUTI SANRAKSHA CHARITABLE TRUST)

APPROVED BY : AICTE, AFFILIATED WITH : GTU.

Ipcowala Education Campus Dharmaj - 388430 Ta. Petlad, Di. Anand (Gujarat)
 Mob. : 9099063458,9978947157 Email :ipcowalaengg@gmail.com web : www.iietedu.uc.in

36		INTEL CORE IR -3 3RD GENERATION	SOFTWARE ENGINEERING	15	25
37		INTEL CORE IR -5 3RD GENERATION	C & C++	17	25
BE- Computer					
1	2	INTEL CORE IR -3 3RD GENERATION	C & C++	17	25
2	3	INTEL CORE IR -3 3RD GENERATION	WEB DEVELOPMENT LAB	18	25
3	3	INTEL CORE IR -3 3RD GENERATION	DATABASE MANAGEMENT SYSTEM	17	25
4	4	NOT WORKING CONDITION(11)	DATA MINNING AND BUSINESS INTELLIGENCE	11	25
5	4	INTEL CORE IR -3 3RD GENERATION	C & C++	-17	25
6	5	WINDOWS7 INTEL® CORE(TM) & DUO CPU	WEB DEVELOPMENT LAB	14	25
7	5	DUO CPU	OPERATING SYSTEM	15	25
8	5	WINDOWS7 INTEL® CORE(TM) & DUO CPU	ADVANCE JAVA TECHNOLOGY	17	25
9	5	INTEL CORE IR -3 3RD GENERATION	OBJECT ORIENTED PROGRAMMING	17	25
10	6	INTEL CORE IR -3 3RD GENERATION	MOBILE COMPUTING & WIRELESS COMMUNICATION	12	25
11	6	NOT WORKING CONDITION(12)	CYBER SECURITY	18	25
12	6	INTEL CORE IR -3 3RD GENERATION(18)	INFORMATION SECURITY		25
13	7	WINDOWS7 INTEL® CORE(TM) & DUO CPU	C & C++	14	25
14	7	DUO CPU	WEB DEVELOPMENT LAB	17	25
15	7	INTEL CORE IR -5 3RD GENERATION	C & C++	18	25
16	7	INTEL CORE IR -3 3RD GENERATION	WEB DEVELOPMENT LAB	17	25
17	7	INTEL CORE IR -3 3RD GENERATION	SOFTWARE ENGINEERING LAB	15	25
ME - Computer					
1	1	INTEL CORE IR -3 3RD GENERATION	C & C++	17	25
2	1	WINDOWS7 INTEL® CORE(TM) & DUO CPU	WEB DEVELOPMENT LAB	15	25
3	1	INTEL CORE IR -3 3RD GENERATION	MOBILE COMPUTING & WIRELESS COMMUNICATION	18	25
4	2	INTEL CORE IR -3 3RD GENERATION	CYBER SECURITY	17	25
5	2	INTEL CORE IR -5 7TH GENERATION	INFORMATION SECURITY	16	25
6	2	INTEL CORE IR -5 7TH GENERATION	DATA MING & BUSINESS INTELLIGENCE	16	25
7	2	INTEL CORE IR -3 3RD GENERATION	INTEL CORE IR -5 3RD GENERATION	12	25



IPCOWALA INSTITUTE OF ENGINEERING & TECHNOLOGY

(MANAGED BY SANSKRUTI SANRAKSHA CHARITABLE TRUST)

APPROVED BY : AICTE, AFFILIATED WITH : GTU.

Ipcowala Education Campus Dharmaj - 388430 Ta. Petlad, Di. Anand (Gujarat)
Mob. : 9099063458,9978947157 Email :ipcowalaengg@gmail.com web : www.iietedu.uc.in

- Total number of systems connected by LAN- All
- Total number of systems connected to WAN - All
- Internet bandwidth- 42 mbps
- Major software packages available- Yes
- Special purpose facilities available - N.A.

WORKSHOP: 800 SQ. MTR.

AS PER AICTE, AND GTU GUIDELINES.

- List of facilities available.

Games and Sports Facilities:- Available

Chess, Carom, FoolRacate, Volly Ball, Foot Ball, Cricket etc.

Extra Curriculum Activities:-

Like Quiz Competition, Yoga, Ras Garba, Mahendi Competition, Sports week, Annual day etc.

Soft Skill Development Facilities :- Available

Number of Classrooms and size of each:-

No.	Class Room	size
1	22	67.1 sq. mtr. each.

Number of Tutorial rooms and size of each :-

No.	Tutorial rooms	size
1	5	33.05.00

Number of laboratories and size of each

SR. No.	Course	Name of the Laboratory	Lab / Major Equipments	Lab no.	size
1	FIRST YEAR	COMPUER CENTRE (Computer Programming)	COMPUER, PRINTER WITH INTERNET CONNECTION	500000	150
2	FIRST YEAR	MATERIAL SCIENCE & METTURLOGY	PHOTO SPECTOMETER, MICROSCOPEMETALLURGICAL, PLAIN CARBON STEEL, CAST IRON, FERROUS MICRO, NON METALIC & METALIC	159610	67.1



IPCOWALA INSTITUTE OF ENGINEERING & TECHNOLOGY

(MANAGED BY SANSKRUTI SANRAKSHA CHARITABLE TRUST)

APPROVED BY : AICTE, AFFILIATED WITH : GTU.

Ipcowala Education Campus Dharmaj - 388430 Ta. Petlad, Di. Anand (Gujarat)
 Mob. : 9099063458,9978947157 Email :ipcowalaengg@gmail.com web : www.iietedu.uc.in

3	FIRST YEAR	BASIC ELECTRICAL & ELECTRONICS ENGINEERING	VOLT METER, RESISTOR, COIL, LAMP LOAD, TECO METER , AMMETER, DIGITAL MULTI METER.COILS & CAPACITORS, SOLAR CELL, PHOTO DIOD, TRANSISTOR, CRO, TRANSFORMER, MCB, ELCB INDUCTION MOTOR, DC/AC MOTOR,	132850	67.1
4	FIRST YEAR	APPLIED MECHANICS	FORCE TABLE, SLIDING FRICTION SURFACE WOOD, GLASS, SIMPLE PURCHASE CRAB,WHEEL & AXLE, SCREW JACK	79000	67.1
5	FIRST YEAR	BASIC ENGINEERING DRAWING	DRG. TABLES WITH MODELS AND DRG. SET.	153000	67.1
6	FIRST YEAR	LANGUAGE LAB	COMPUER, PRINTER WITH INTERNET CONNECTION & HEADPHONE WITH MIC	500000	67.1
7	FIRST YEAR	FUNDAMENTAL OF DIGITAL ELECTRONICS	VERIOS KIND OF CIRCUITS	123410	67.1
8	FIRST YEAR	PHYSICS LAB	, Varnier Calipers, Micrometer Screw Gauge, Young Modules set up , Viscosity measurement Sonometer , Series and parallel Resister kit, Diode characteristics Trainer kit Resistivity and Band gap measurement Verification Of Ohms law, DMM	104630	67.1
9	FIRST YEAR	WORKSHOP/ WORKSHOP/ MANUFACTURING PRACTICES	FITTING TOOLS, SMITHY TOOLS, CARPENTARY TOOLS, PIPE FITTING TOOLS, WELDING TOOLS/ TABLE, DRILL, HEMMAR, HEXO etc.	390550	200
10	FIRST YEAR	Audio Visual Lab	Audio/ Video Lab. Instruments	125000	67.1
11	DCMT (EE 3rd sem) & PTRM (EE 4th Sem)	Machine Lab	A.C/D.C Machine Power Supply Panel D.C Shunt Motor and Alternator set with control panel.Dc Shunt motor and Dic Shunt generator with Central Panel. Experiment Panel for Transformer with Panel. Break Test on 3-phase A.C. S.Cage induction Motor with Panel. DC Shunt motor Swan's Burn Test (Panel). 1- Capacitor Start / Run induction motor with Panel. Resistive load 3- 415V AC load. Single Phase resistive Load. Load Bank. Digital Tachometer. Variable Auto Transformer. Single phase energy meter. Stepper Motor	192000	67.1



IPCOWALA INSTITUTE OF ENGINEERING & TECHNOLOGY

(MANAGED BY SANSKRUTI SANRAKSHA CHARITABLE TRUST)

APPROVED BY : AICTE, AFFILIATED WITH : GTU.

Ipcowala Education Campus Dharmaj - 388430 Ta. Petlad, Di. Anand (Gujarat)
 Mob. : 9099063458,9978947157 Email :ipcowalaengg@gmail.com web : www.iietedu.uc.in

12	EE 6 SEM	SGP/ MTC D Lab	Characteristic of over current Relay. Characteristic of differential Relay. Transformer Protection using static Relay. Characteristic of Directional Relay. 3 Phase Transformer Lamp Load.	SGP (EE 6 sem) MTC D (EE 6 SEM)	67.1
13	A.c.c (2 nd sem) DCC (1 sem) EI (3 sem) UEE (4 sem)	A.c.c (2 nd sem) BEEE Lab EI Lab UEE lab	Ammeter 0 to 1 A , 0 to 5 A and 0 to 10 A AC & DC., Ammeter 0 to 5 A and 0 to 10 A Only DC., Voltmeter 0 to 150V and 0 to 250V Only DC. Voltmeter 0 to 250/500 AC & DC. Wattmeter 0 to 2500 W AC & DC. Choke coil 1 Phase 230V. Choke coil 3 Phase 415V.DC Cut set (1500) RPM, AC Cut set (Squirrel Cage) Rheostat (100 ohm). Rheostat (250 ohm). Rheostat (180 ohm). 1 phase Transformer 230V.1 phase Lamp bank., Variac 1 Phase Digital Multi meter. Digital Clip-on meter. Series Parallel Connection 1 phase. KVL & KCL (Kit).Lamp 5=60 Volt 5=100 Volt	A.c.c (2 nd sem) DCC (1 sem) EI (3 sem) UEE (4 sem)	67.1
14	DEDI (EE 4th Sem)	DE Lab	1) Logical gates Kit.2) Logical gates by Discrete components Kit. 3) De-Morgan's Kit.4) Half Adder Kit.5) Full Adder Kit. 6) Half Sub tractor Kit.7) Full Sub tractor Kit. 8) 4 bit full adder by IC 74 83.9) 4 bits binary comparator by IC 7485.10) BCD to Decimal (4 to 10 lines) Decoder using IC74145. 11) 8:1 Multiplexer by IC 74 151.12) R-S Flip Flop. 13) J - K Flip Flop.14) D Flip Flop.15) Ripple counter by IC 7493.16) 4 BIT, Gray to Binary Converter.17) Binary to Gray conversion, BCD to Excess 3 conversion, Excess 3 to BCD conversion.18) BCD- seven segment Decoder, BCD to Decimal Decoder, 74147 decimal to BCD encoder, IC 74148 8:3 line priority encoder.19) Multiplexer, De – Multiplexer.	03	67.1
15	PE(EE 5th sem) ECC (3 sem)	PE / ECC Lab	V-I Chara Of Pn Junction Diode Led & Zener Diode Half Wave & Full Wave Rectifiers With Filter ,Diode Clipping & Clamping Cir Cuits Integrator & Differentiator, Zener Diode's V-I Charcteris, Half & Full Wave Rectifiers With Filter Cdisplay), Zener Diode V-I Characteristic, V-I Characteri Stics Of	04	67.1



IPCOWALA INSTITUTE OF ENGINEERING & TECHNOLOGY

(MANAGED BY SANSKRUTI SANRAKSHA CHARITABLE TRUST)

APPROVED BY : AICTE, AFFILIATED WITH : GTU.

Ipcowala Education Campus Dharmaj - 388430 Ta. Petlad, Di. Anand (Gujarat)
 Mob. : 9099063458,9978947157 Email :ipcowalaengg@gmail.com web : www.iietedu.uc.in

			Transistor Ce Configuration), V-I Characteristics Of Transistor (Cb Configuration)		
16		AUTOMOBILE ENGINES / AUTOMOBILE TRANSMISSION & MECHANISM / / FUELS & LUBRICANTS/ AUTOMOBILE POLLUTION CONTROL ENGINEERING/ VEHICLE BODY ENGINEERING	<ul style="list-style-type: none"> • engine cut section • carburetor cut section • Charts for Otto & Diesel Cycles, Components of I.C Engines, Fuel Systems • (Circuits) of Petrol/ Diesel/ LPG/ CNG powered Engines, Lubricating System and Cooling Systems. • Chassis • Frame • Transmission system • Clutch cut section • Gearbox cut section • Hydraulic braking system (demo) Cut Sectioned working model of various types of clutches, gear boxes, fluid coupling/ • Torque convertor. • Cut sectioned working model of various brake systems, differential. • Display board of various steering gear mechanisms, power steering. • Display board of various types of suspension system and shock absorbers. • Charts for various types of chassis and frames, wheels and tyres • Various Viscometer • Flash point, fire point, volatility measurement setup for fuel and lubricants • Red wood viscometer • Flash and fire point apparatus • Fuel distillation plant • Cloud and pour point apparatus • Carbon residue tester • CFR test engine • U tube viscometer 	NEW WS	400



IPCOWALA INSTITUTE OF ENGINEERING & TECHNOLOGY

(MANAGED BY SANSKRUTI SANRAKSHA CHARITABLE TRUST)

APPROVED BY : AICTE, AFFILIATED WITH : GTU.

Ipcowala Education Campus Dharmaj - 388430 Ta. Petlad, Di. Anand (Gujarat)
 Mob. : 9099063458,9978947157 Email :ipcowalaengg@gmail.com web : www.iietedu.uc.in

			<ul style="list-style-type: none"> • Westphal balance • Exhaust gas analyzer • MPFI system • Smoke meter • Catalytic converter • LPG & CNG kit • Different types of muffler. • Emission control devices (e.g PCV valve, EGR valve, Charcoal Canister) • Different hammer • Dolly blocks • Body pullers • power lock stand • air spray gun • Buffing tool 		
17		AUTOMOBILE ELECTRICAL SYSTEM	<ul style="list-style-type: none"> • Starting motor cut section • Spark plug test rig • Wiring system layout • Alternator cut section • Measuring instruments. • Battery with cut section. • Various component of electrical & electronic Ignition system. • Various starters with drive & its cut section. • Alternator (its component) & d.c. generator & its cut section. • Various accessories like Flasher unit, Speedo meter etc 	23/24	240
18		MODERN VEHICLE TECHNOLOGY/ FABRICATION TECHNOLOGY/ METROLOGY & INSTRUMENTATION	<ul style="list-style-type: none"> • tachometers, • Mechanical Strain Gauge • Electrical Strain Gauge • Piezoelectric transducer. • Sensors & actuators. • Electronic Stability Control(ESC) Anti-lock Braking Systems(ABS) <ul style="list-style-type: none"> • WELDING WIRE • WELDING HOLDER 	WS	67.1



IPCOWALA INSTITUTE OF ENGINEERING & TECHNOLOGY

(MANAGED BY SANSKRUTI SANRAKSHA CHARITABLE TRUST)

APPROVED BY : AICTE, AFFILIATED WITH : GTU.

Ipcowala Education Campus Dharmaj - 388430 Ta. Petlad, Di. Anand (Gujarat)
 Mob. : 9099063458,9978947157 Email :ipcowalaengg@gmail.com web : www.iietedu.uc.in

			<ul style="list-style-type: none"> • WELDING MACHINE • SLIP GAUGE SET, COMPLETE IN BOX, • VERNIER BEVEL PROTECTOR (UNIVERSAL), • VERNIER CALIPERS • MICROMETER 		
19		ENGINEERING GRAPHICS & DESIGN	<ul style="list-style-type: none"> • CONE,CUBE(20*20), • RECTANGULAR PRISM, • TRINGULAR PRISM • SQARE PRISM • Drg. Table 	134/135	201
20		MATERIAL SCIENCE AND METALLURGY	<ul style="list-style-type: none"> • METALLURGICAL MICROSCOPE, • MUFFER FURNACE, • DIA PENETRATION SET • SEND STAND FOR SPECIMEN • HARDNABILITY TEST 	113/c	67.1
21	Fourth	MECHANICAL MEASUREMENT AND METROLOGY	<ul style="list-style-type: none"> • SLIP GAUGE SET, COMPLETE IN BOX, • VERNIER BEVEL PROTECTOR (UNIVERSAL), • VERNIER CALIPERS <p>MICROMETER</p>	WS	67.1
22	Fourth	FLUID MECHANICS AND HYDRAULICS MACHINES.	<ul style="list-style-type: none"> • NOTCH APPRATUS • (RECTANGULAR NOTCH • TRIANGULAR NOTCH • TRAPEROIDAL NOTCH), • BERNOULLI'S THEOREM APPRATUS, • PPIPE FRICTION APPRATUS, 	02	67.1



IPCOWALA INSTITUTE OF ENGINEERING & TECHNOLOGY

(MANAGED BY SANSKRUTI SANRAKSHA CHARITABLE TRUST)

APPROVED BY : AICTE, AFFILIATED WITH : GTU.

Ipcowala Education Campus Dharmaj - 388430 Ta. Petlad, Di. Anand (Gujarat)
 Mob. : 9099063458,9978947157 Email :ipcowalaengg@gmail.com web : www.iietedu.uc.in

			<ul style="list-style-type: none"> • REYNOLD'S APPRATUS • METACENTRIC HEIGHT APPRATUS, • ROTAMETER TEST RIG, • IMPPECT JET APPRATUS, • PELTON WHEEL TURBINE TEST RIG • CENTRIFUGALPUMP TEST RIG WITH SPEED TYPE 		
23	FOURTH/FIFTH	MANUFACTURING PROCESSES/ MANUFACTURING TECHNOLOGY	<ul style="list-style-type: none"> • WELDING WIRE • WELDING HOLDER, • WELDING MACHINE, • LATHE MACHINE WITH ACCESSORIES, • MEALING MACHINE • SHAPER MACHINE 	07	67.1
24	FIFTH	DYNAMICS OF MACHINERY	<ul style="list-style-type: none"> • UNIVERSAL VIBRATION APPRATUS, • MOTORIZED GYROSCOPE 	7	67.1
	FIFTH	HEAT TRANSFER	<ul style="list-style-type: none"> • COMPOSITE WALL APPARATUS (WITH COOLING PLATE), • CRITICAL HEAT FLUX APPARATUS, • EMISSIVITY MEASUREMENT APPARATUS 	5	67.1
	SIXTH	COMPUTER AIDED DESIGN	<ul style="list-style-type: none"> • AUTOCAD 	15	67.1
	SIXTH	APPLIED THERMODYNAMICS	<ul style="list-style-type: none"> • REFRIGERATION TRAINER, • AIR CONDITIONING TEST RIG 	5	67.1



IPCOWALA INSTITUTE OF ENGINEERING & TECHNOLOGY

(MANAGED BY SANSKRUTI SANRAKSHA CHARITABLE TRUST)

APPROVED BY : AICTE, AFFILIATED WITH : GTU.

Ipcowala Education Campus Dharmaj - 388430 Ta. Petlad, Di. Anand (Gujarat)
 Mob. : 9099063458,9978947157 Email :ipcowalaengg@gmail.com web : www.iietedu.uc.in

			(DUCT TYPE) <ul style="list-style-type: none"> PLATE TYPE HEAT EXCHANGER APPARATUS 		
	SECOND YEAR	SOIL MECHANICS	Core cutter with Dolly & hammer Sieve Shaker Consolidation apparatus Pycnometer (a)Tri axial shear test Pore pressure test with stand Foot pump for lateral pressure assembly Free swell index glass cylinder 100 ml with stopper Sampling Auger-100 mm size blade type Pile driving machine model Liquid limit Plastic limit Shrinkage limit Sand replacement method CBR test Unconfined comp. Test Mould proctor compaction Swell test	9	
	SECOND YEAR	SURVEYING	Eastman Plane table Eastman Prismatic Compass Measuring Survey Chain Automatic Level Sokkia Model Eastman Planimeter Freeman Steel Tape Eastman Vernier Transit (Theodolite) Eastman Survey Compass Digital Theodolite Plan-table With Accessories as per IS - 22 mm thick	105	
	THIRD YEAR	CONCRETE TECHNOLOGY	Concrete mixer machine Vicat needle apparatus Slump test + Hammer for concrete testing Flexural testing machine Compacting factor machine Vibrating table L- box V- funnel	10	



IPCOWALA INSTITUTE OF ENGINEERING & TECHNOLOGY

(MANAGED BY SANSKRUTI SANRAKSHA CHARITABLE TRUST)

APPROVED BY : AICTE, AFFILIATED WITH : GTU.

Ipcowala Education Campus Dharmaj - 388430 Ta. Petlad, Di. Anand (Gujarat)
Mob. : 9099063458,9978947157 Email :ipcowalaengg@gmail.com web : www.iietedu.uc.in

			Vee-Bee consistometer Vibrating machine with digital meter with 7.06cm cube mould Flow table hand operated Compression testing machine-2000KN -Digital		
	THIRD YEAR	HIGHWAY ENGINEERING	Aggregate crushing apparatus- Flakiness guage Length guage Aggregate Impact apparatus- Standard Penetrometer- Ring & Ball apparatus- Mortar Mixer Ductility Test apparatus Viscometer	9	
	THIRD YEAR	WATER SUPPLY & SANITARY ENGG.	pH meter B.O.D test C.O.D test	9	

Drawing hall and size: - (2) 132 sq.mtr.

Computer Centre with capacity of each:- 1 of 150 sq.mtr.

Central Examination Facility, Number of rooms and capacity of each:-

- Available as per AICTE/GTU requirements.

Teaching Learning process

- By delivering the lecturer using board & multimedia.